



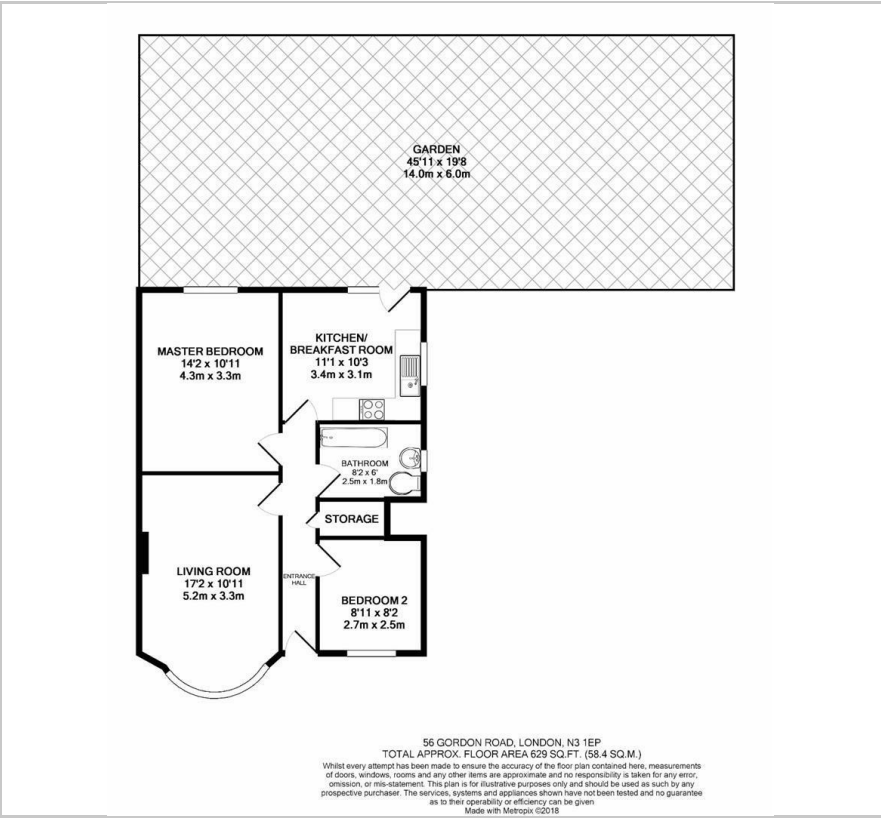
56 Gordon Road

, London, N3 1EP

£2,200 Per month



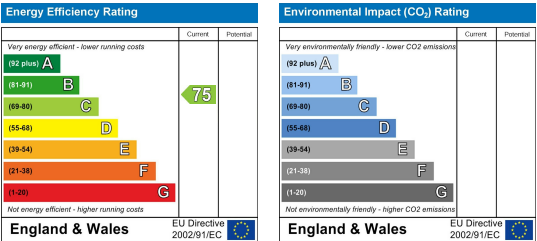
Floor Plan



Area Map



Energy Efficiency Graph



Viewing

Please contact our Sunshine Estates Office on 020 8066 5055 if you wish to arrange a viewing appointment for this property or require further information.

Sunshine Estates are pleased to present this brand-new 2-bedroom house in Finchley. Situated on the ground floor, the property is in excellent condition and ready for immediate occupancy!

Please see floorplan attached!

Finchley offers the perfect blend of urban convenience and suburban tranquillity, making it a highly sought-after location for families, professionals, and individuals alike. With excellent schools, a diverse culinary scene, and an abundance of green spaces, Finchley provides its residents with a high quality of life.

- In the area:
- West Finchley and Mill Hill East stations
 - Finchley Golf Club
 - Halcyon Gardens
 - Victoria Park
 - A variety of local restaurants and shops to explore

Available now! Contact us today to arrange a viewing.

These particulars, whilst believed to be accurate are set out as a general outline only for guidance and do not constitute any part of an offer or contract. Intending purchasers should not rely on them as statements of representation of fact, but must satisfy themselves by inspection or otherwise as to their accuracy. No person in this firm's employment has the authority to make or give any representation or warranty in respect of the property.